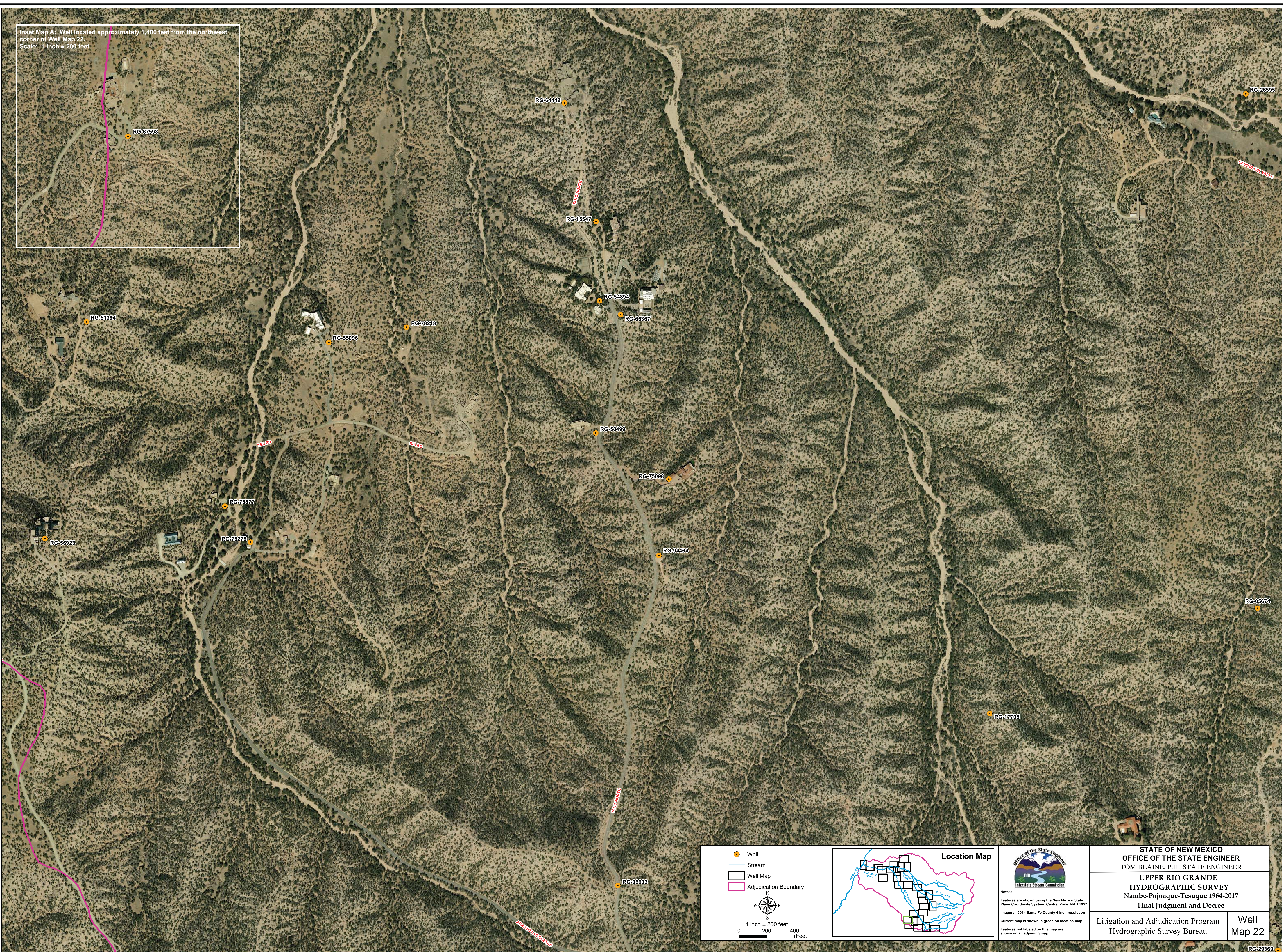
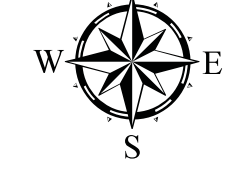
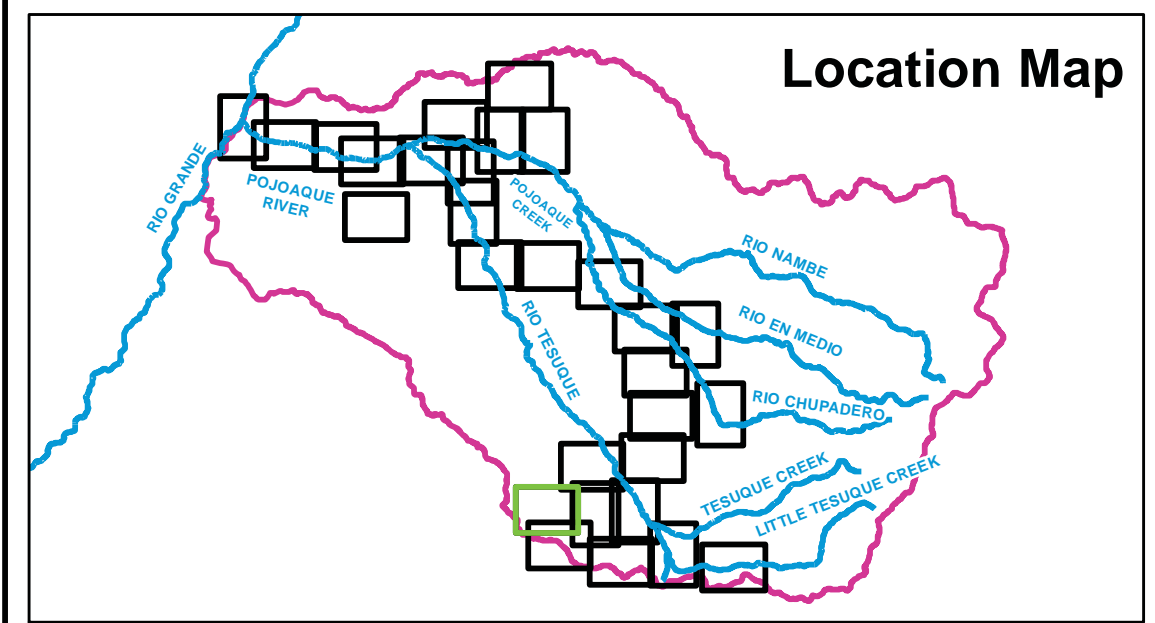


Inset Map A: Well located approximately 1,400 feet from the northwest corner of Well Map 22.  
Scale: 1 inch = 200 feet



- Well
- Stream
- Well Map
- Adjudication Boundary

  
 1 inch = 200 feet  
 0 200 400 Feet



**Office of the State Engineer**  
Interstate Stream Commission

Notes:  
Features are shown using the New Mexico State Plane Coordinate System, Central Zone, NAD 1927  
Imagery: 2014 Santa Fe County 6 inch resolution  
Current map is shown in green on location map  
Features not labeled on this map are shown on an adjoining map

**STATE OF NEW MEXICO**  
**OFFICE OF THE STATE ENGINEER**  
TOM BLAINE, P.E., STATE ENGINEER

**UPPER RIO GRANDE**  
**HYDROGRAPHIC SURVEY**  
Nambu-Pojoaque-Tesuque 1964-2017  
Final Judgment and Decree

Litigation and Adjudication Program  
Hydrographic Survey Bureau

**Well Map 22**